




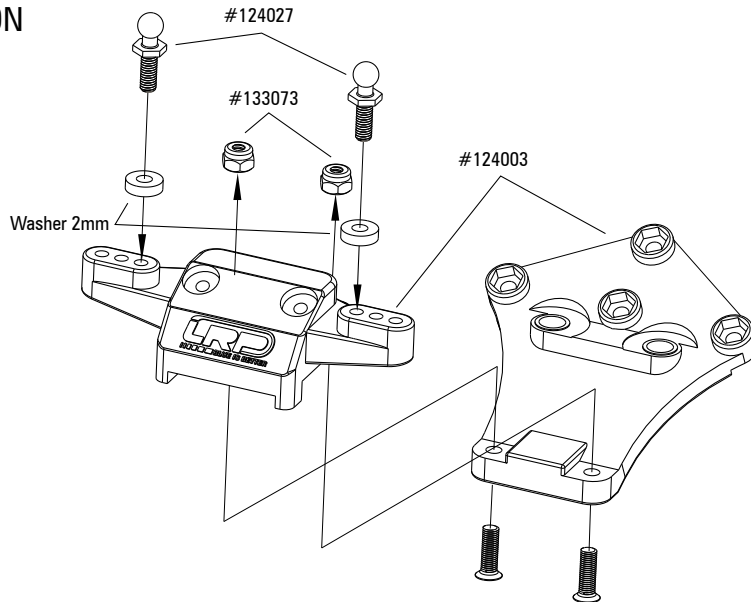


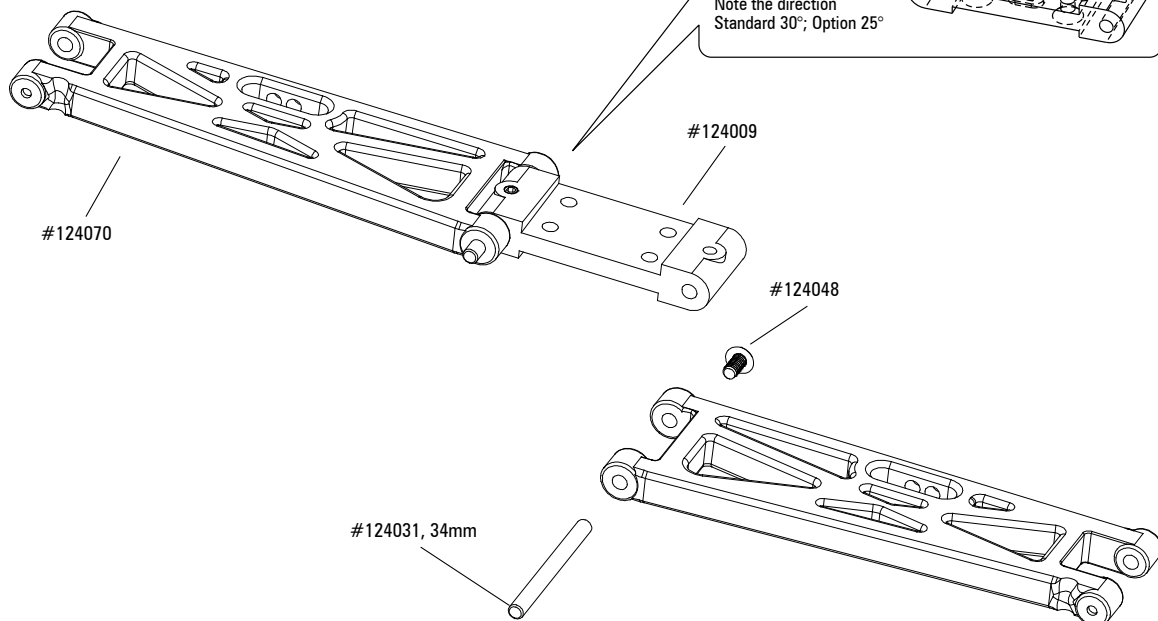
BAUABSCHNITTE CONSTRUCTION SECTIONS

1 FRONT SUSPENSION VORDERACHSE

	Ball Stud (long) #124027	2x
	M3 x 10 #133086	2x
	Nylon Nut M3 #133073	2x
	Washer 3 x 7 x 2	2x
	M2.5 x 5 #124048	2x



2 FRONT SUSPENSION VORDERACHSE





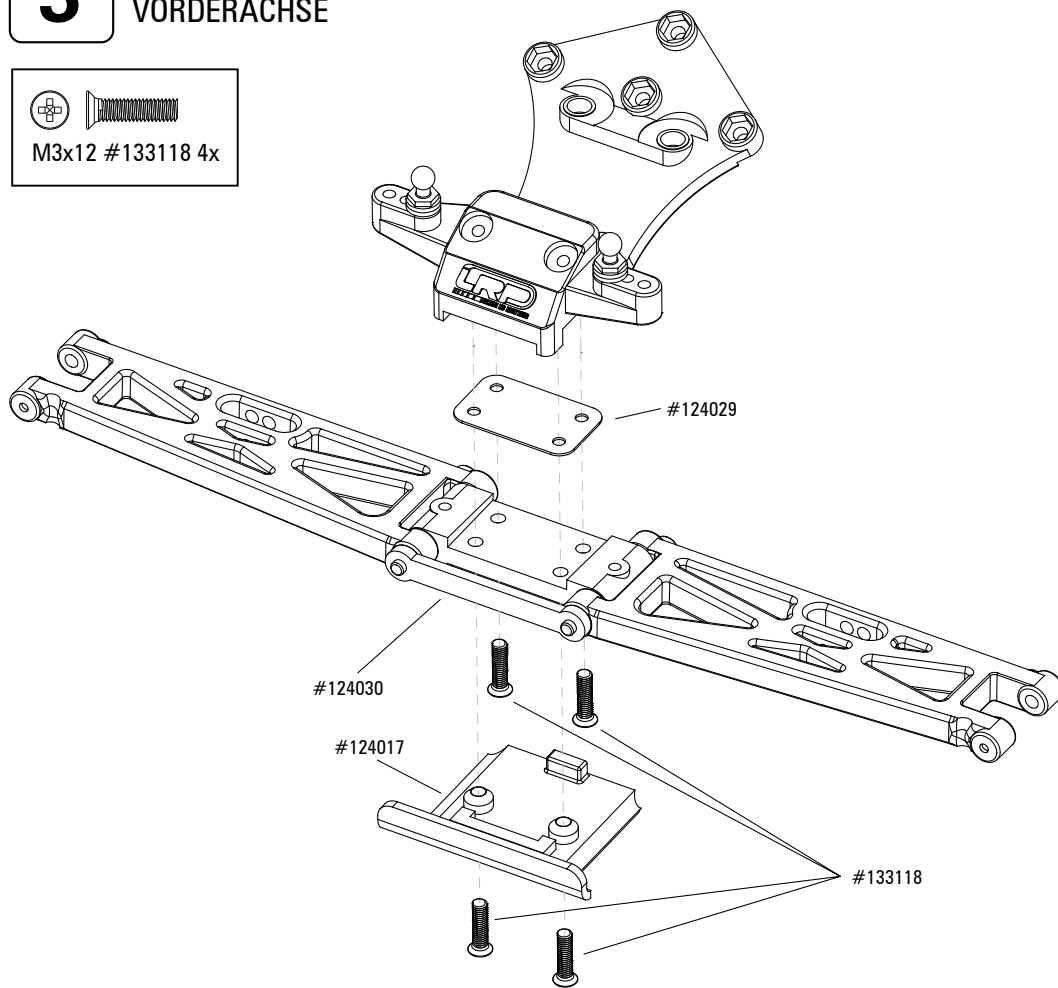
BAUABSCHNITTE CONSTRUCTION SECTIONS

3

FRONT SUSPENSION
VORDERACHSE

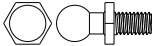



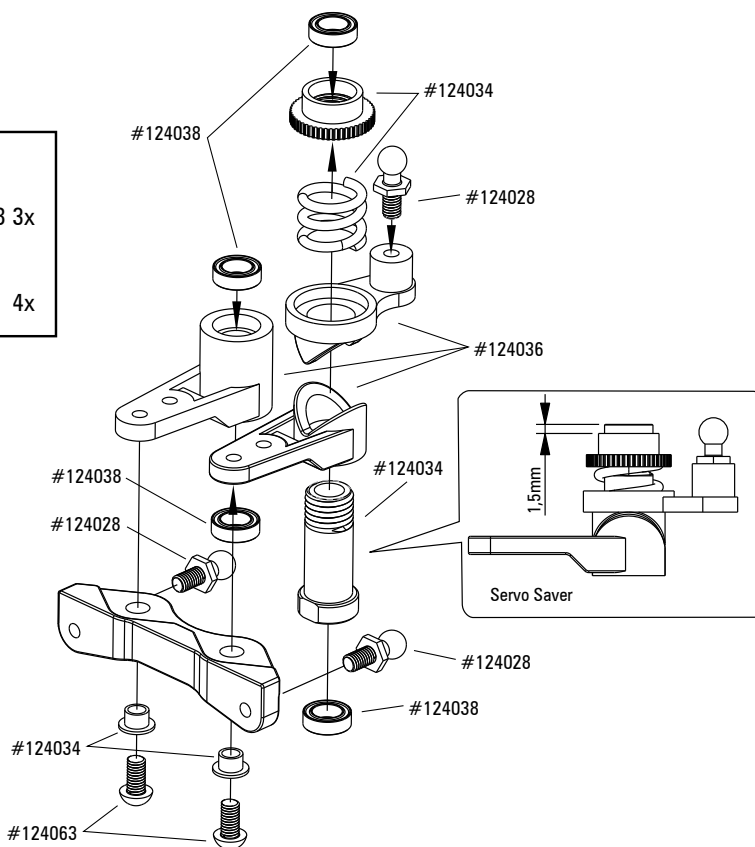
M3x12 #133118 4x



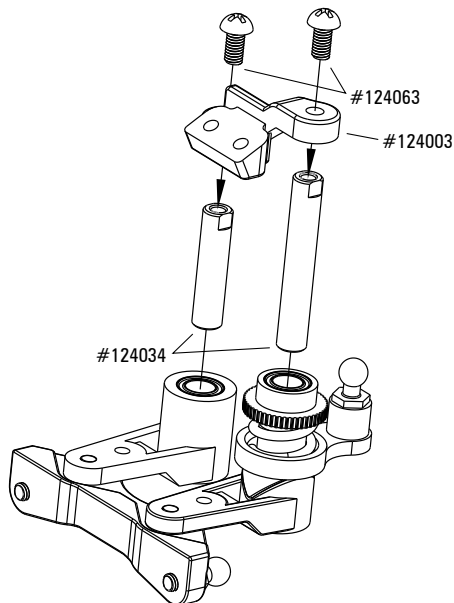
BAUABSCHNITTE CONSTRUCTION SECTIONS

4 STEERING LENKUNG

-  Ball Stud (short) #124028 3x
-  M3 x 6 #124063 4x



5 STEERING LENKUNG



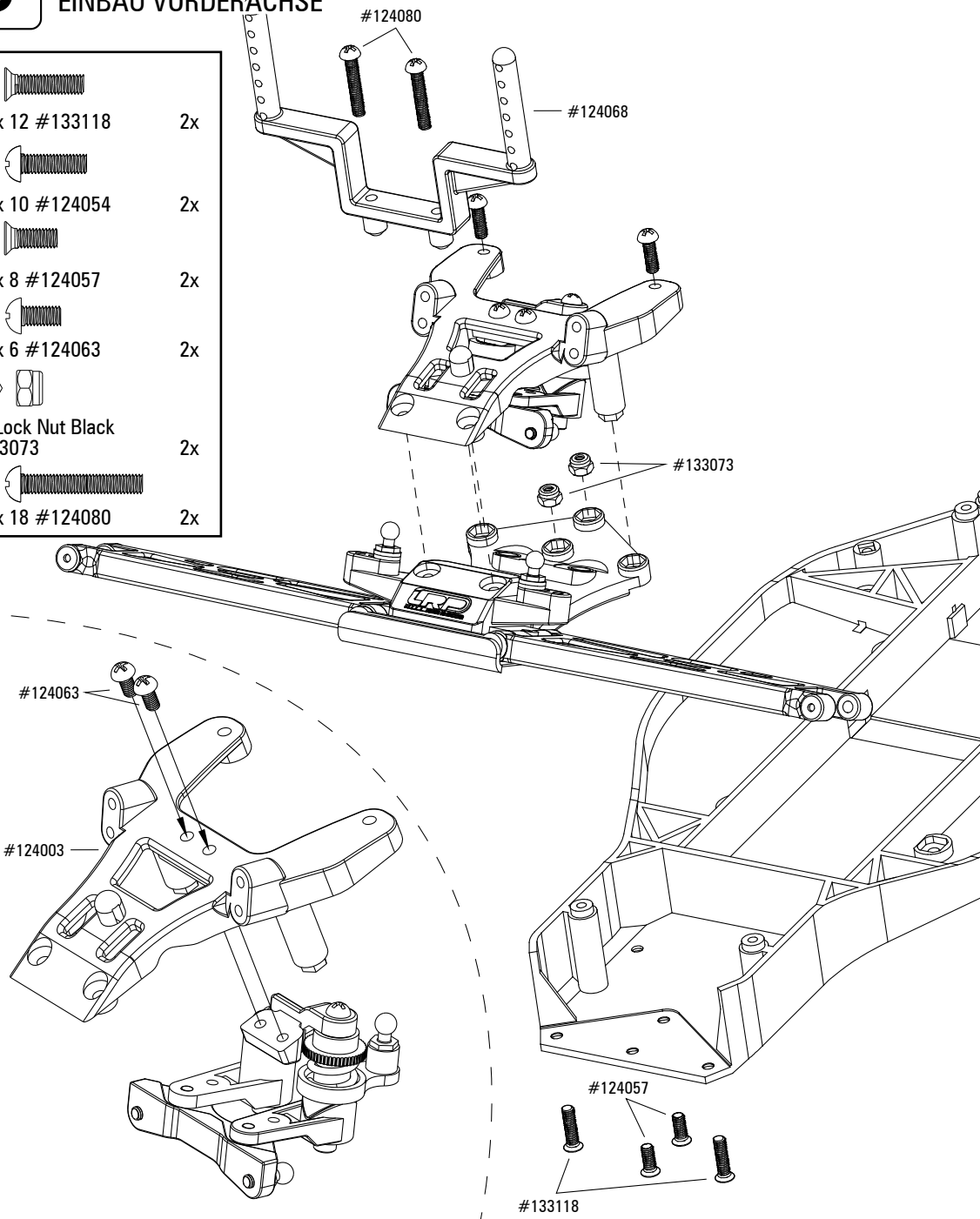


BAUABSCHNITTE CONSTRUCTION SECTIONS

6

ATTACHING FRONT SUSPENSION EINBAU VORDERACHSE

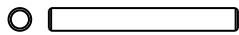






	M3 x 12 #133118	2x
	M3 x 10 #124054	2x
	M3 x 8 #124057	2x
	M3 x 6 #124063	2x
	M3 Lock Nut Black #133073	2x
	M3 x 18 #124080	2x

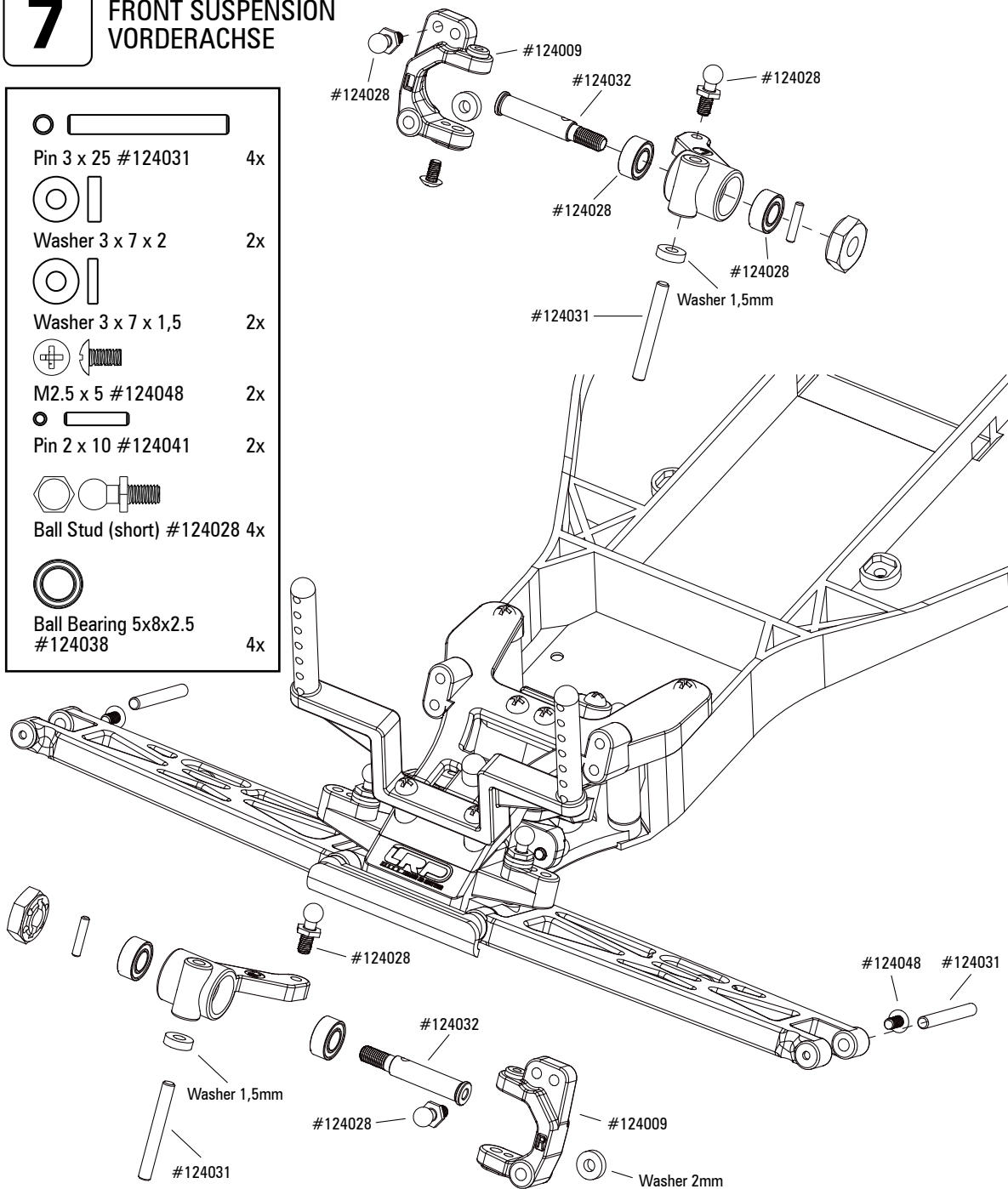


BAUABSCHNITTE CONSTRUCTION SECTIONS

7

FRONT SUSPENSION VORDERACHSE

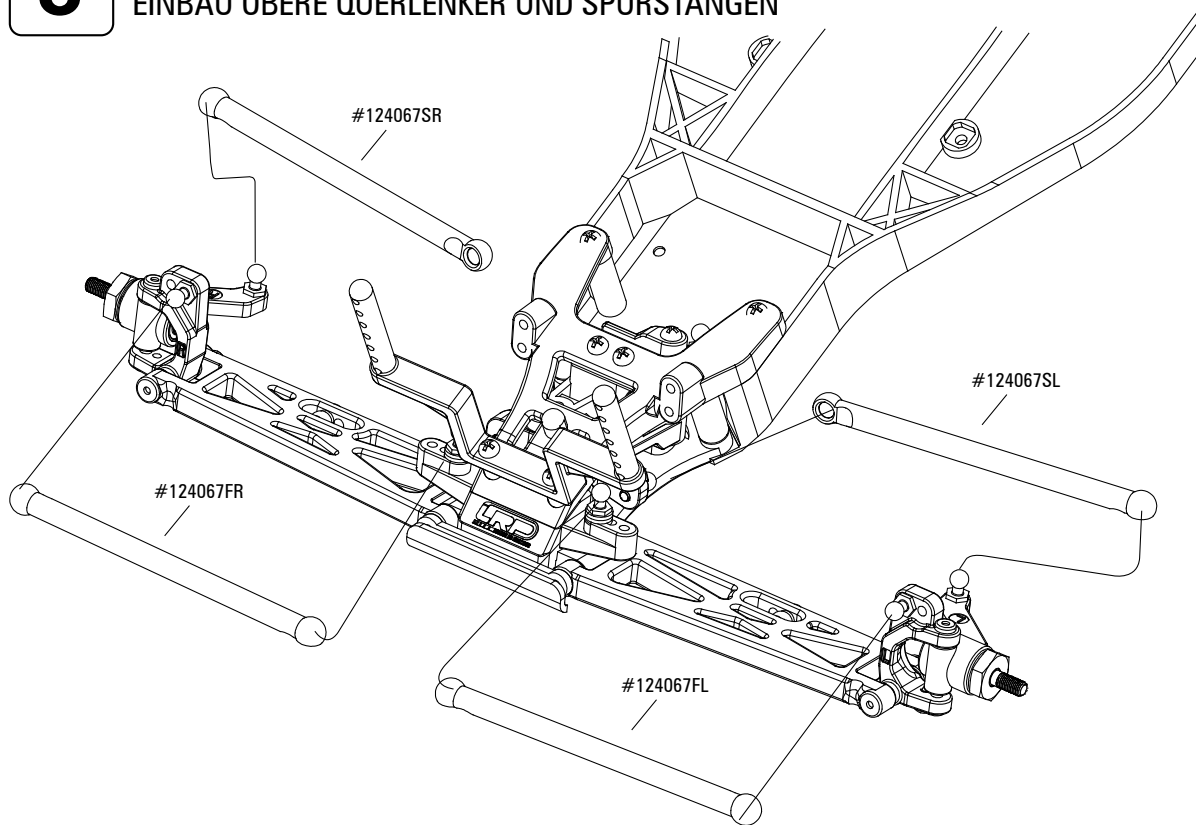
	Pin 3 x 25 #124031	4x
	Washer 3 x 7 x 2	2x
	Washer 3 x 7 x 1,5	2x
	M2.5 x 5 #124048	2x
	Pin 2 x 10 #124041	2x
	Ball Stud (short) #124028	4x
	Ball Bearing 5x8x2.5 #124038	4x








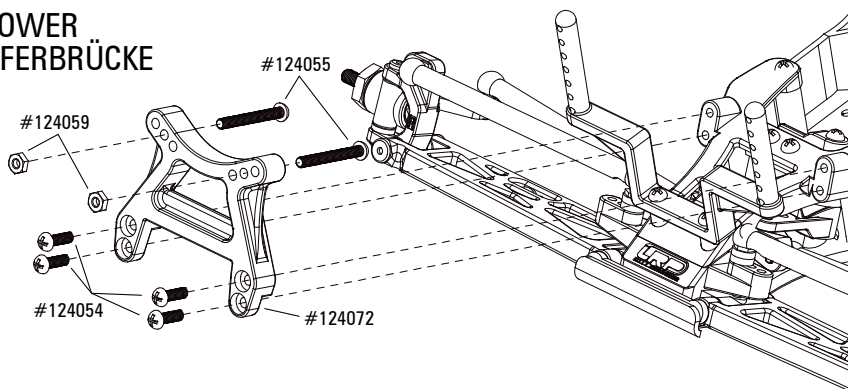
BAUABSCHNITTE CONSTRUCTION SECTIONS

8 FRONT SUSPENSION EINBAU OBERE QUERLENKER UND SPURSTANGEN





9 FRONT SHOCK TOWER VORDERE DÄMPFERBRÜCKE

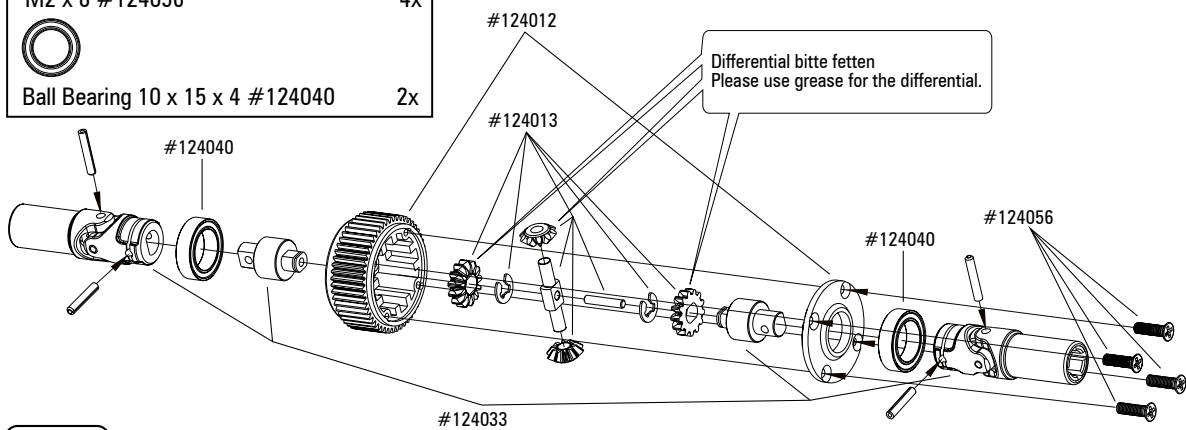
	M3 x 26 #124055	2x
	M3 x 10 #124054	4x
	Nut M3 #124059	2x





BAUABSCHNITTE CONSTRUCTION SECTIONS

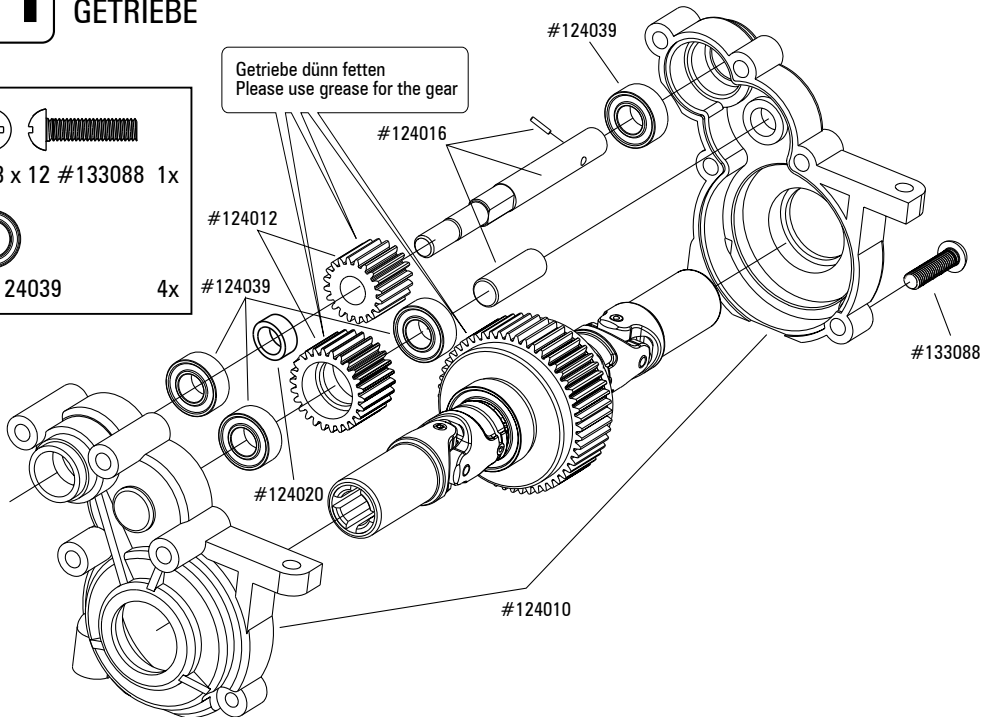
10 DIFFERENTIAL GEAR KEGELDIFFERENTIAL

- | | | |
|---|----------------------------------|----|
|  | M2 x 8 #124056 | 4x |
|  | Ball Bearing 10 x 15 x 4 #124040 | 2x |



11 TRANSMISSION GETRIEBE

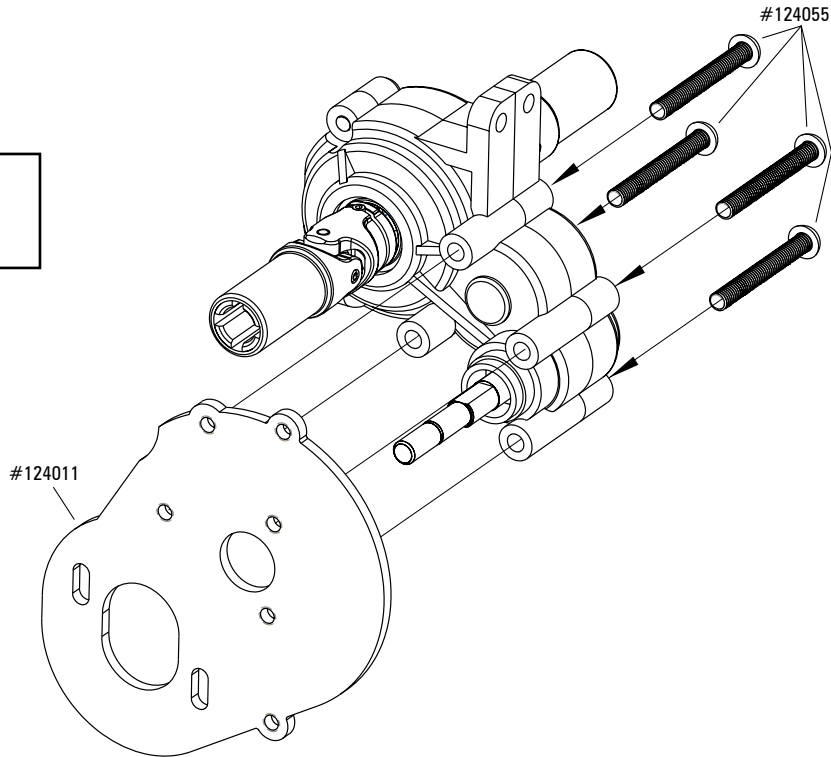
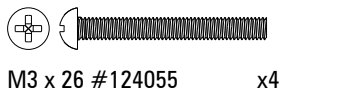
- | | | |
|---|-----------------|----|
|  | M3 x 12 #133088 | 1x |
|  | #124039 | 4x |



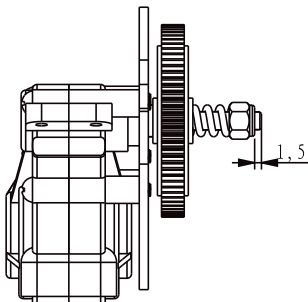
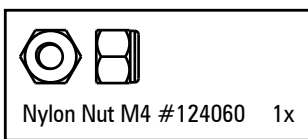
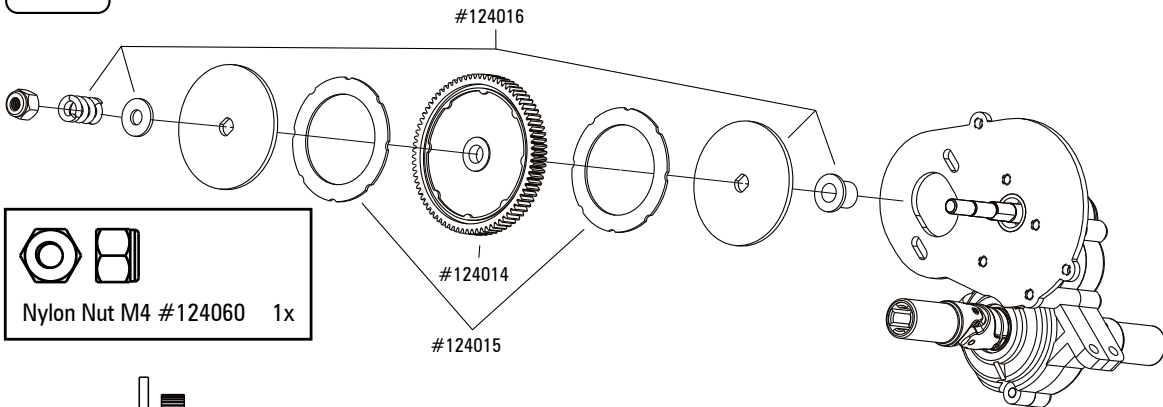


BAUABSCHNITTE CONSTRUCTION SECTIONS

12 MOTOR MOUNT MOTOR PLATTE









13 SLIPPER UNIT SLIPPER EINHEIT

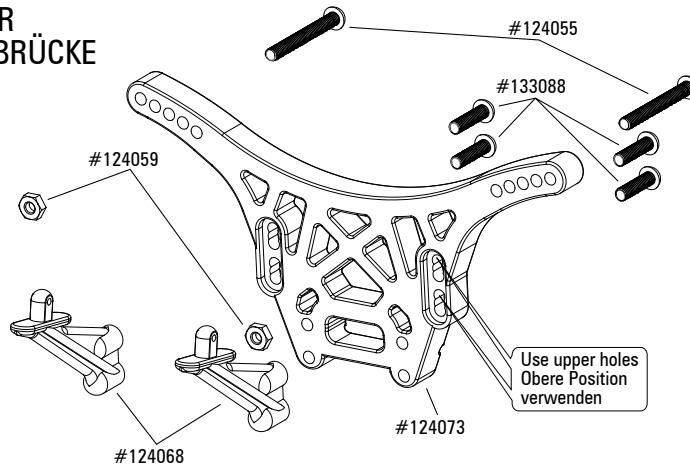


Hinweise zur Slippereinstellung auf Seite 76
Instruction for slipper setting on page 76

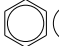
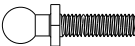


BAUABSCHNITTE CONSTRUCTION SECTIONS

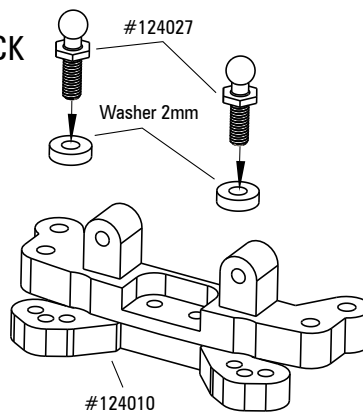
14 REAR SHOCK TOWER HINTERE DÄMPFERBRÜCKE

		
M3 x 26	2x	
		
M3 x 12 #133088	4x	
		
Nut M3 #124059	2x	



15 REAR UPPER DECK HINTERES OBERES DECK

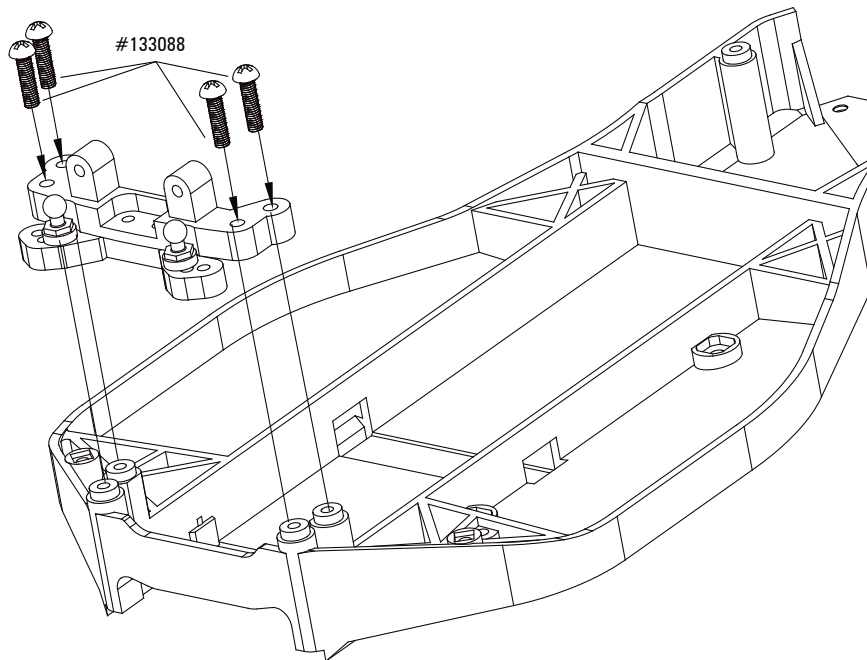
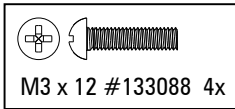
		
Ball Stud long #124027	2x	
		
Washer 3 x 7 x 2	2x	



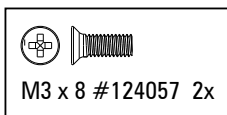


BAUABSCHNITTE CONSTRUCTION SECTIONS

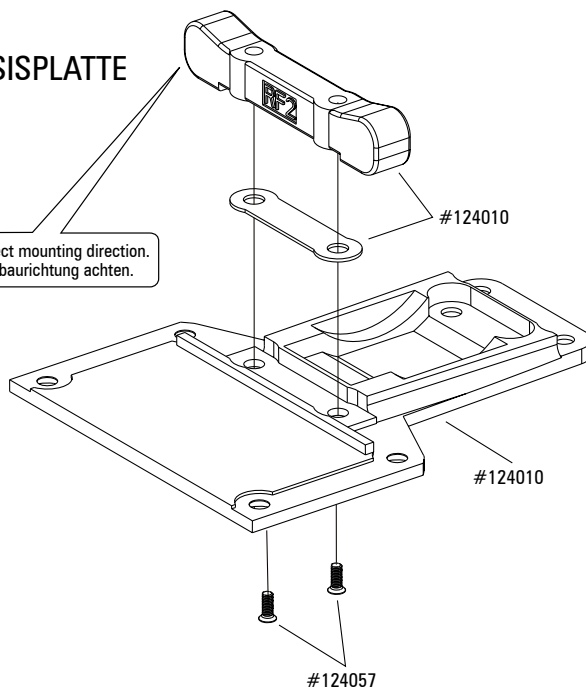
16 ATTACHING REAR UPPER DECK MONTAGE DES HINTEREN, OBEREN DECKS



17 REAR LOWER DECK HINTERE UNTERE CHASSISPLATTE






Please note the correct mounting direction.
Bitte auf korrekte Einbaurichtung achten.

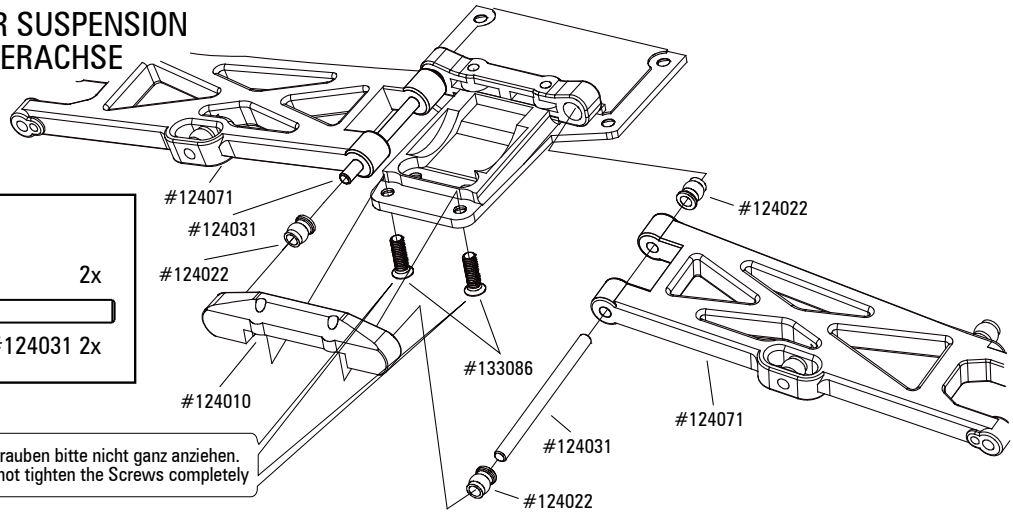


BAUABSCHNITTE CONSTRUCTION SECTIONS

18 REAR SUSPENSION HINTERACHSE

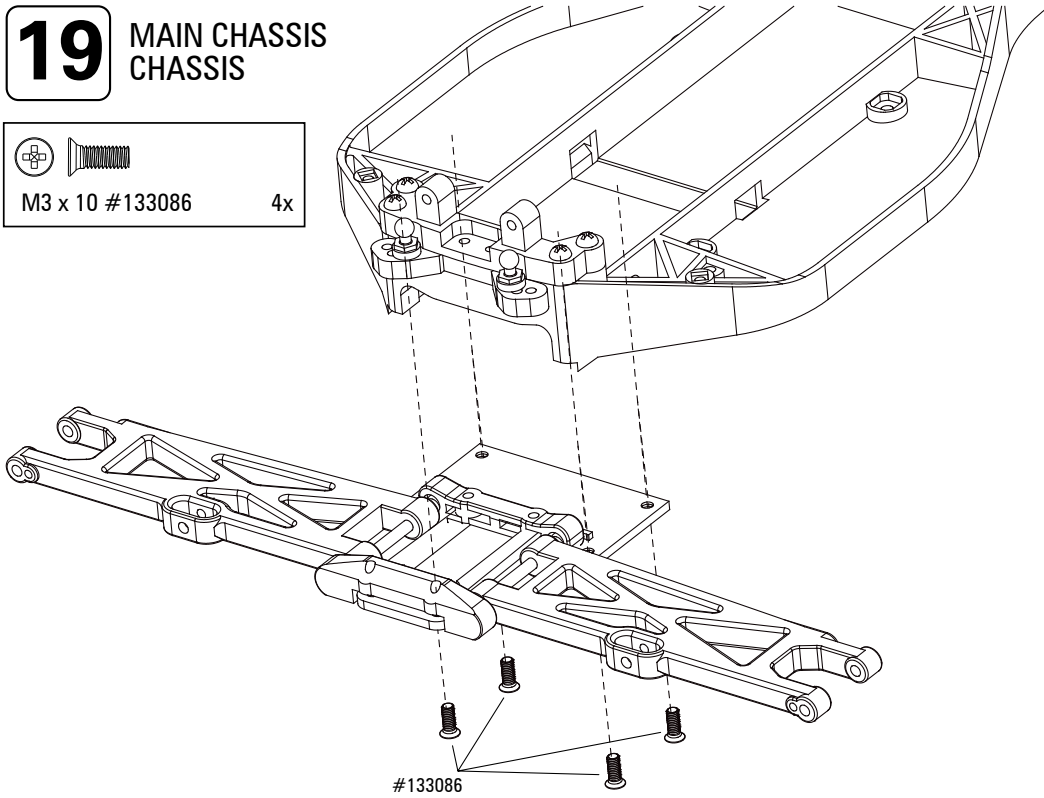
-   M3 x 10 #133086 2x
-  Hinge Pin 3 x 34 #124031 2x

Schrauben bitte nicht ganz anziehen.
Do not tighten the Screws completely



19 MAIN CHASSIS CHASSIS





-   M3 x 10 #133086 4x

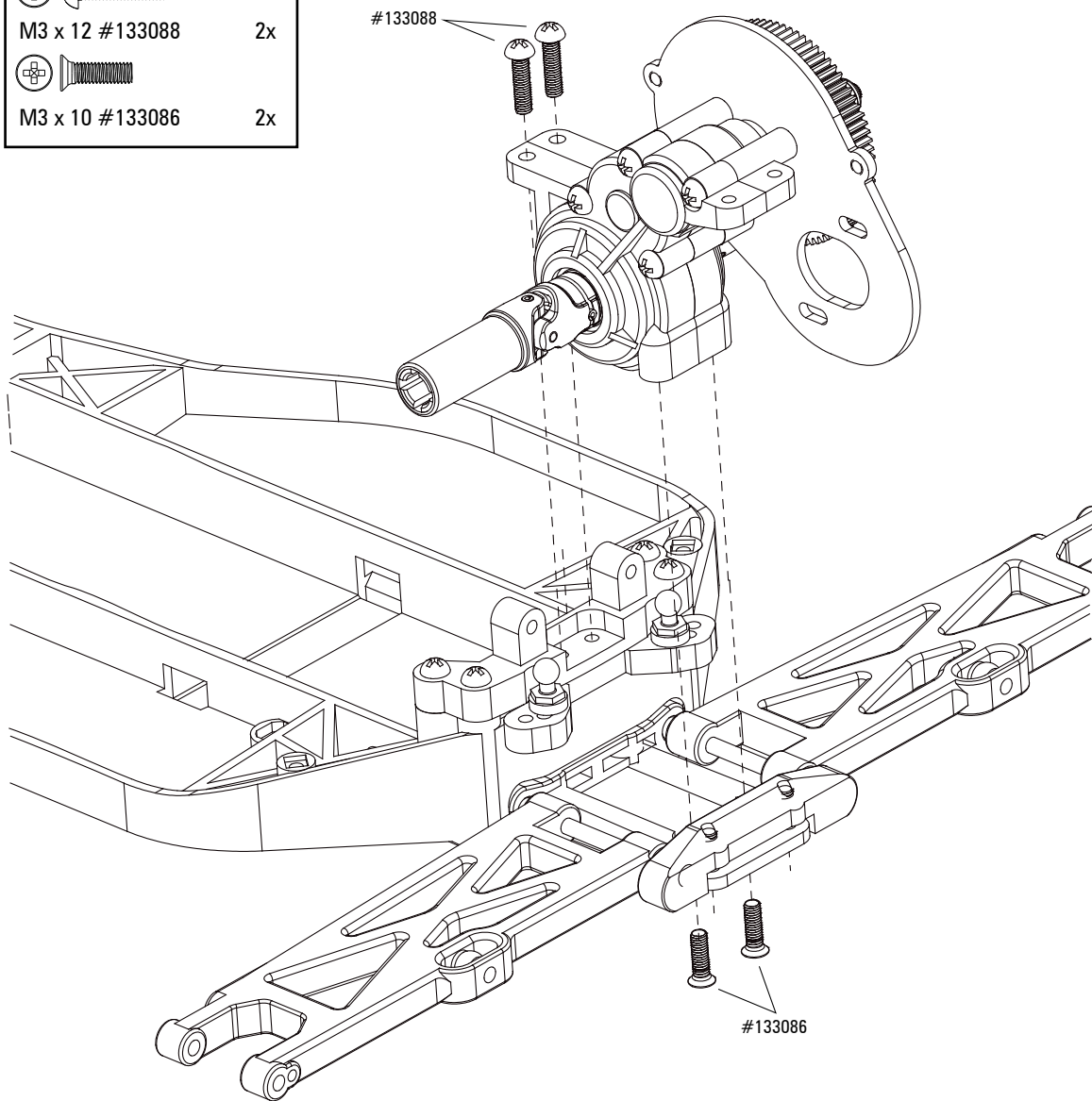




BAUABSCHNITTE CONSTRUCTION SECTIONS

20 REAR GEARBOX ANTRIEBSEINHEIT

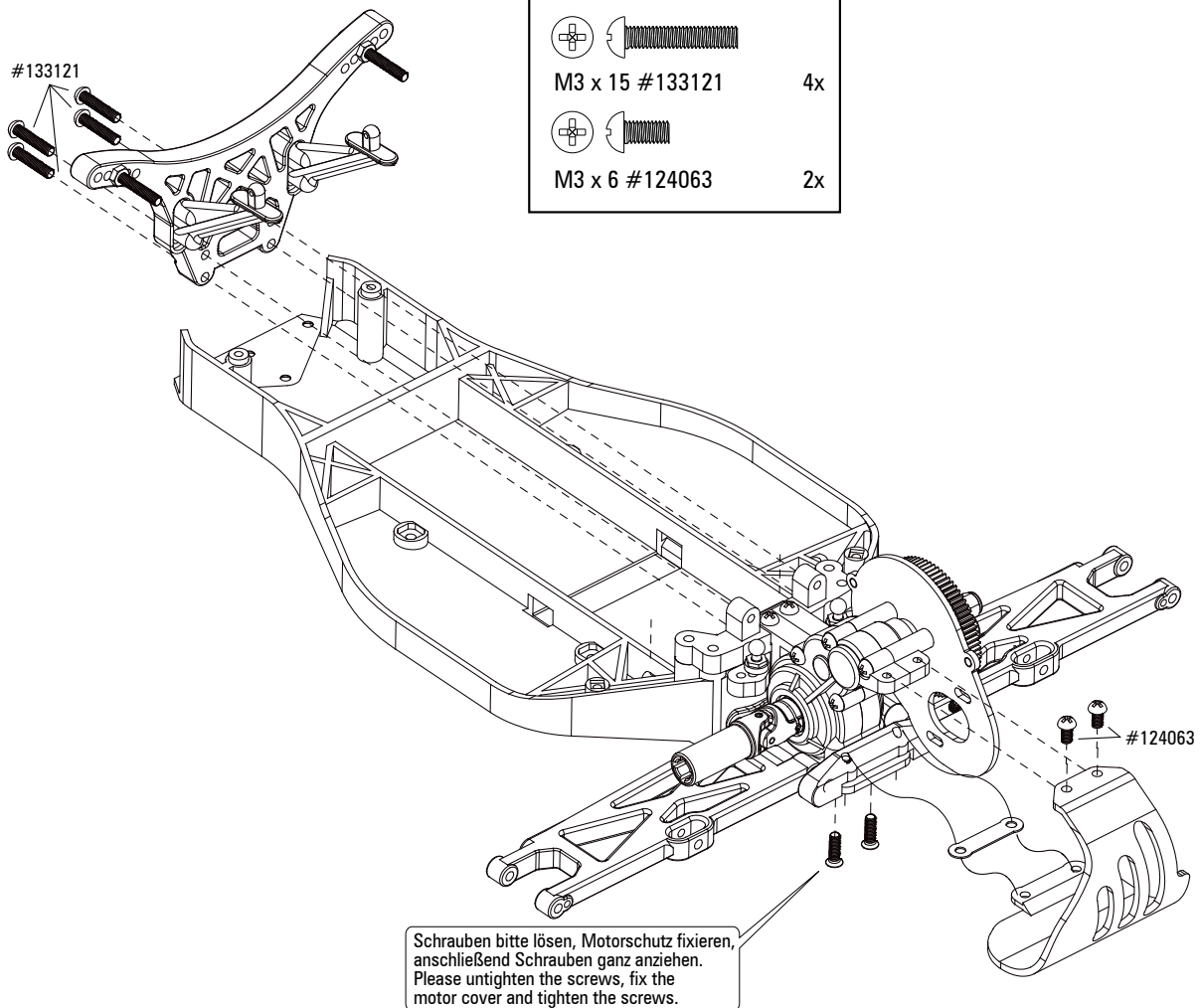
		M3 x 12 #133088	2x
		M3 x 10 #133086	2x



BAUABSCHNITTE CONSTRUCTION SECTIONS

21

REAR SHOCK STAY & MOTOR GUIDE
MONTAGE DER HINTEREN DÄMPFERBRÜCKE & MOTORSCHUTZPLATTE

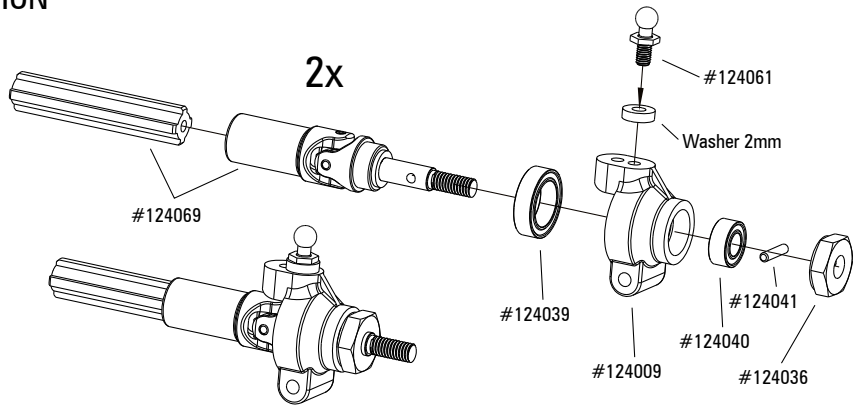




BAUABSCHNITTE CONSTRUCTION SECTIONS

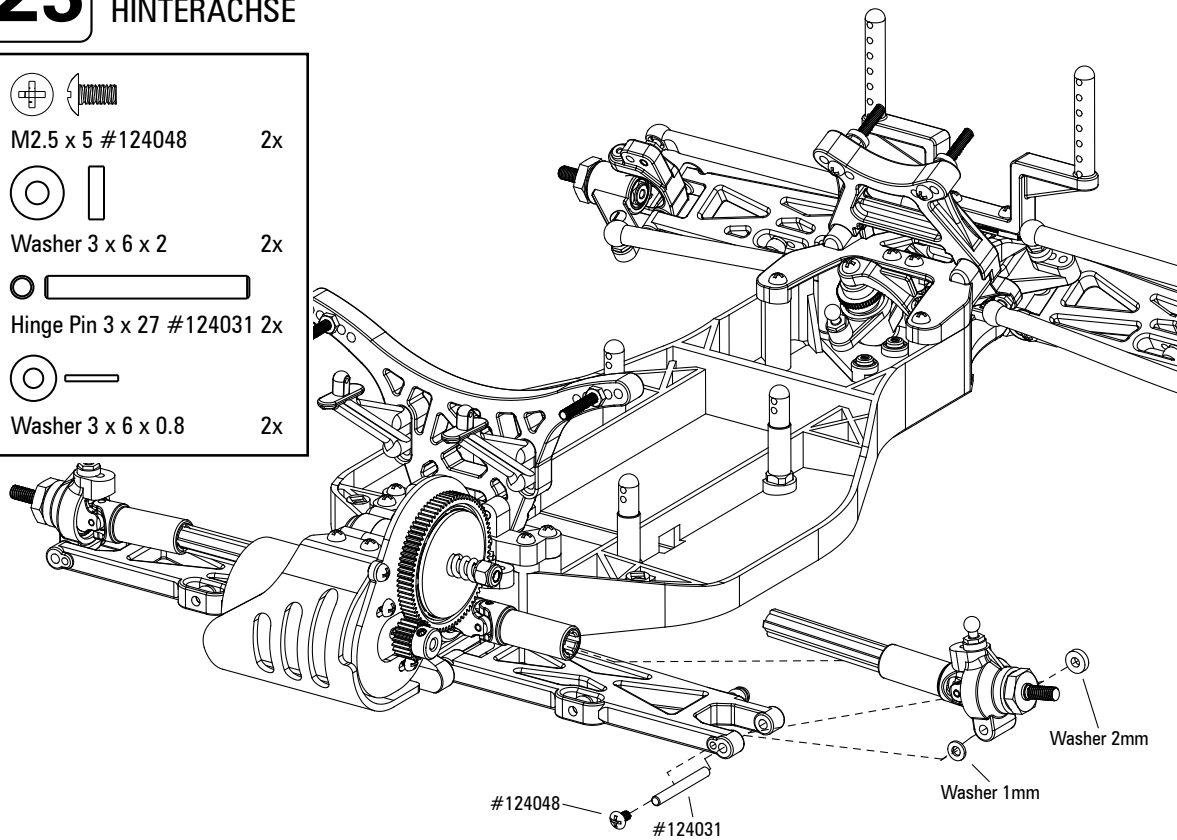
22 REAR SUSPENSION HINTERACHSE

- | | | |
|--|----------------------------|----|
| | Washer 3 x 7 x 2 | 2x |
| | Pin 2 x 10 #124041 | 2x |
| | Ball Stud (medium) #124061 | 2x |



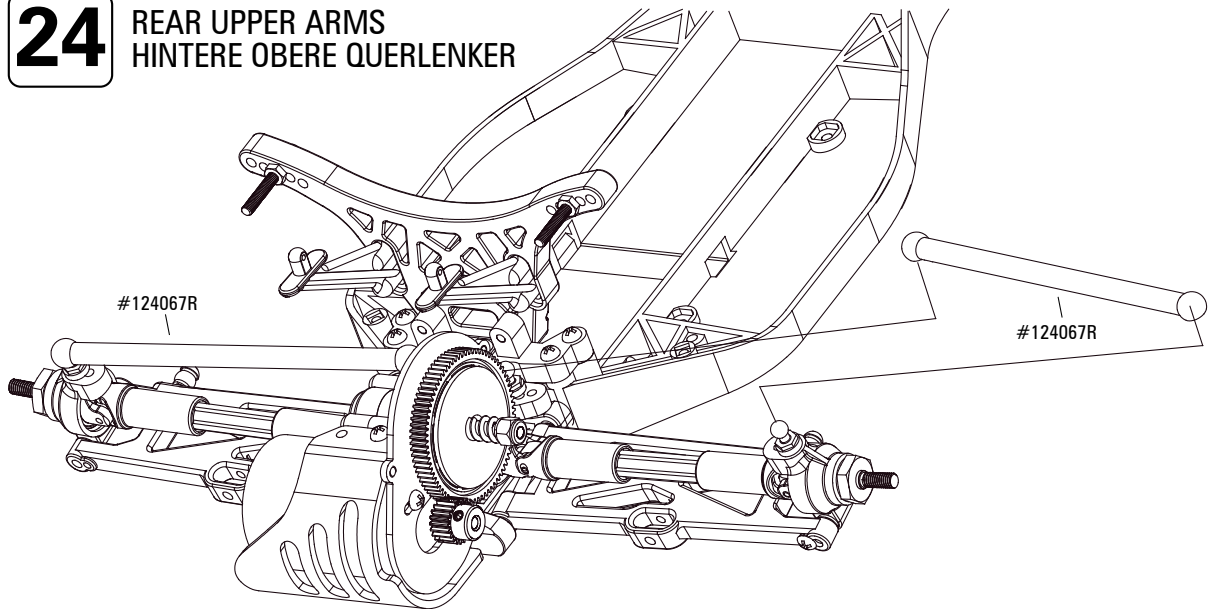
23 REAR SUSPENSION HINTERACHSE

- | | | |
|--|--------------------------|----|
| | M2.5 x 5 #124048 | 2x |
| | Washer 3 x 6 x 2 | 2x |
| | Hinge Pin 3 x 27 #124031 | 2x |
| | Washer 3 x 6 x 0.8 | 2x |

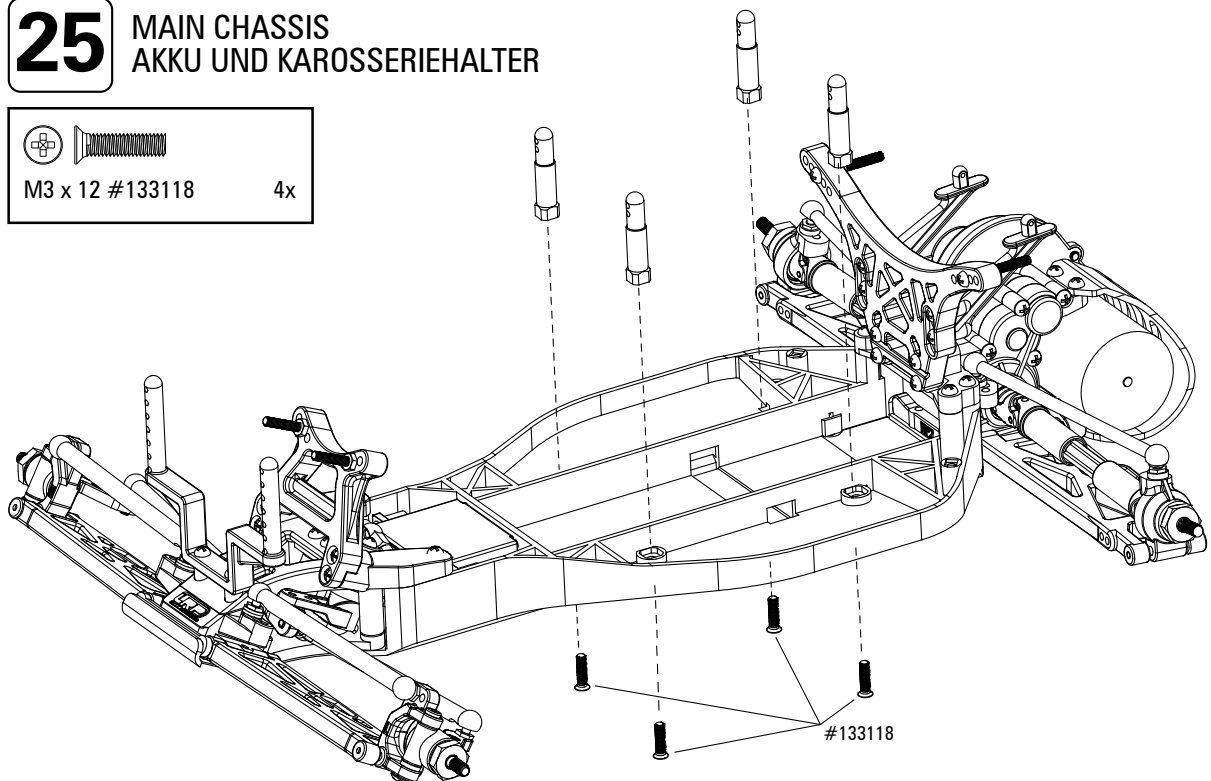
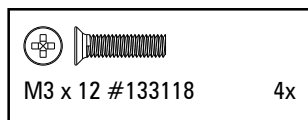


BAUABSCHNITTE CONSTRUCTION SECTIONS

24 REAR UPPER ARMS HINTERE OBERE QUERLENKER



25 MAIN CHASSIS AKKU UND KAROSSERIEHALTER

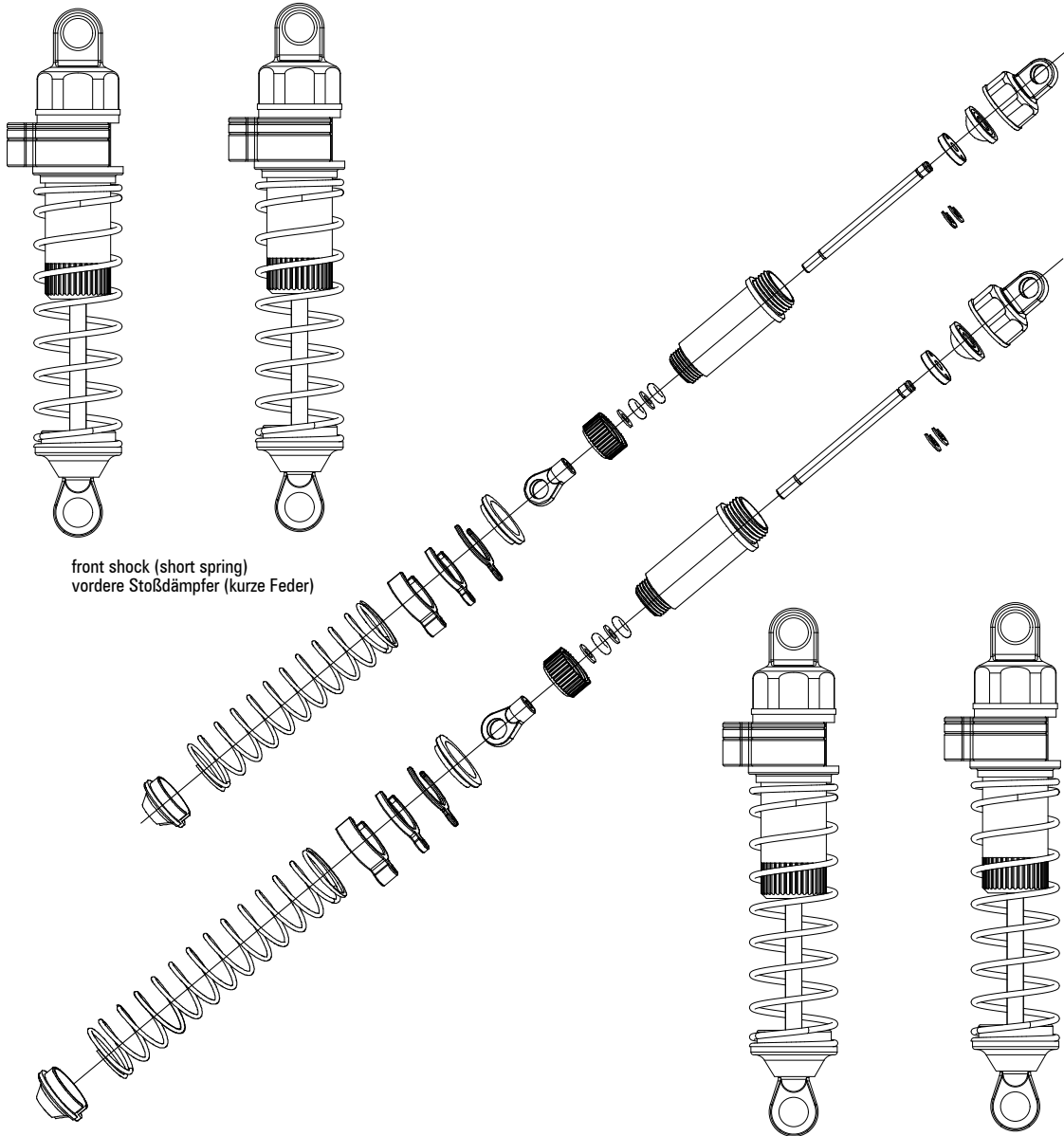




BAUABSCHNITTE CONSTRUCTION SECTIONS

26

SHOCKS
STOSSDÄMPFER









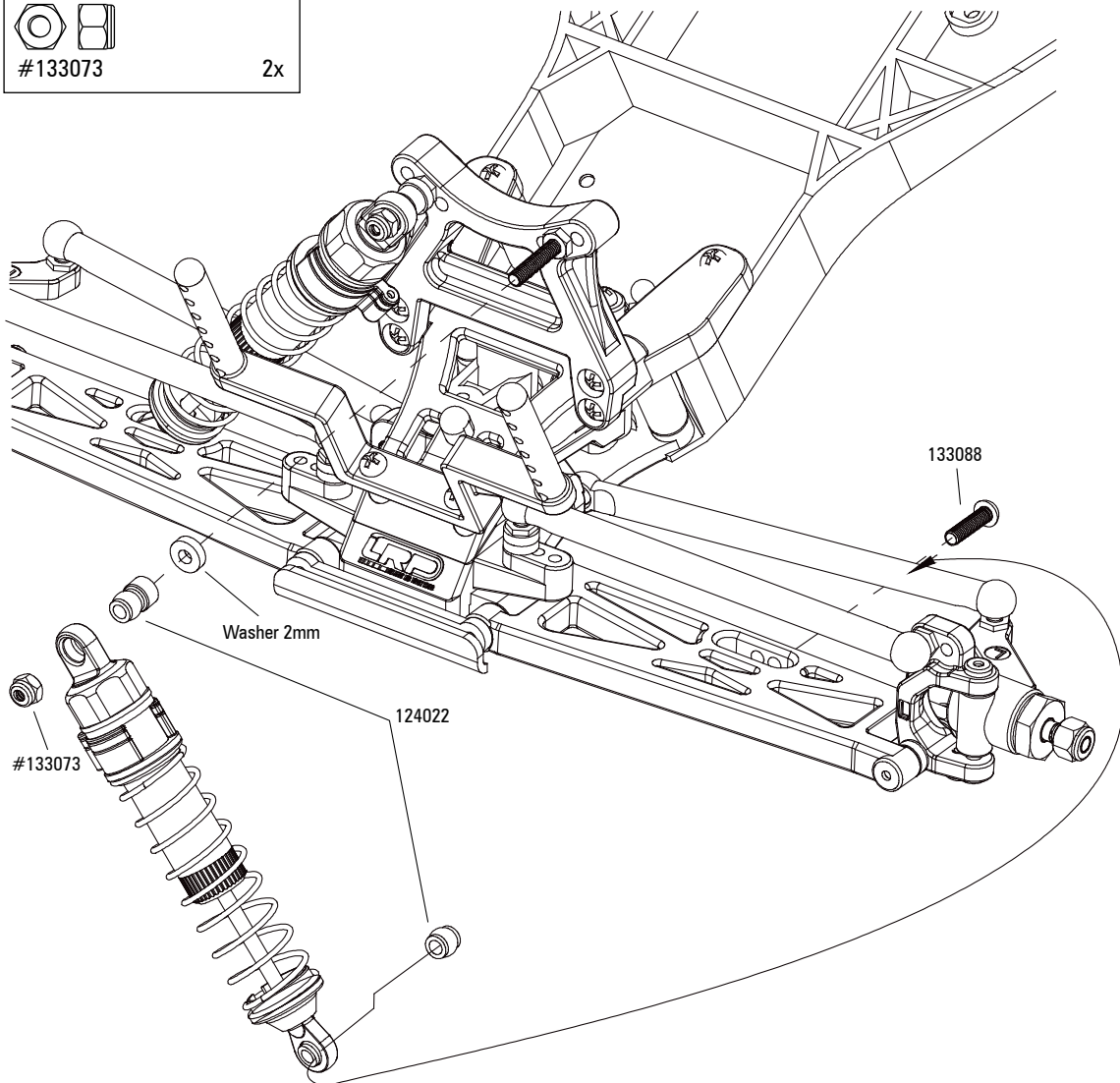
front shock (short spring)
vordere Stoßdämpfer (kurze Feder)

rear shock (long spring)
hintere Stoßdämpfer (lange Feder)

BAUABSCHNITTE CONSTRUCTION SECTIONS

27 FRONT SUSPENSION BEFESTIGUNG DER VORDEREN DÄMPFER

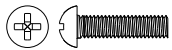

			
M3 x 12 #133088		2x	
			
Washer 3 x 7 x 2		2x	
			
#133073		2x	

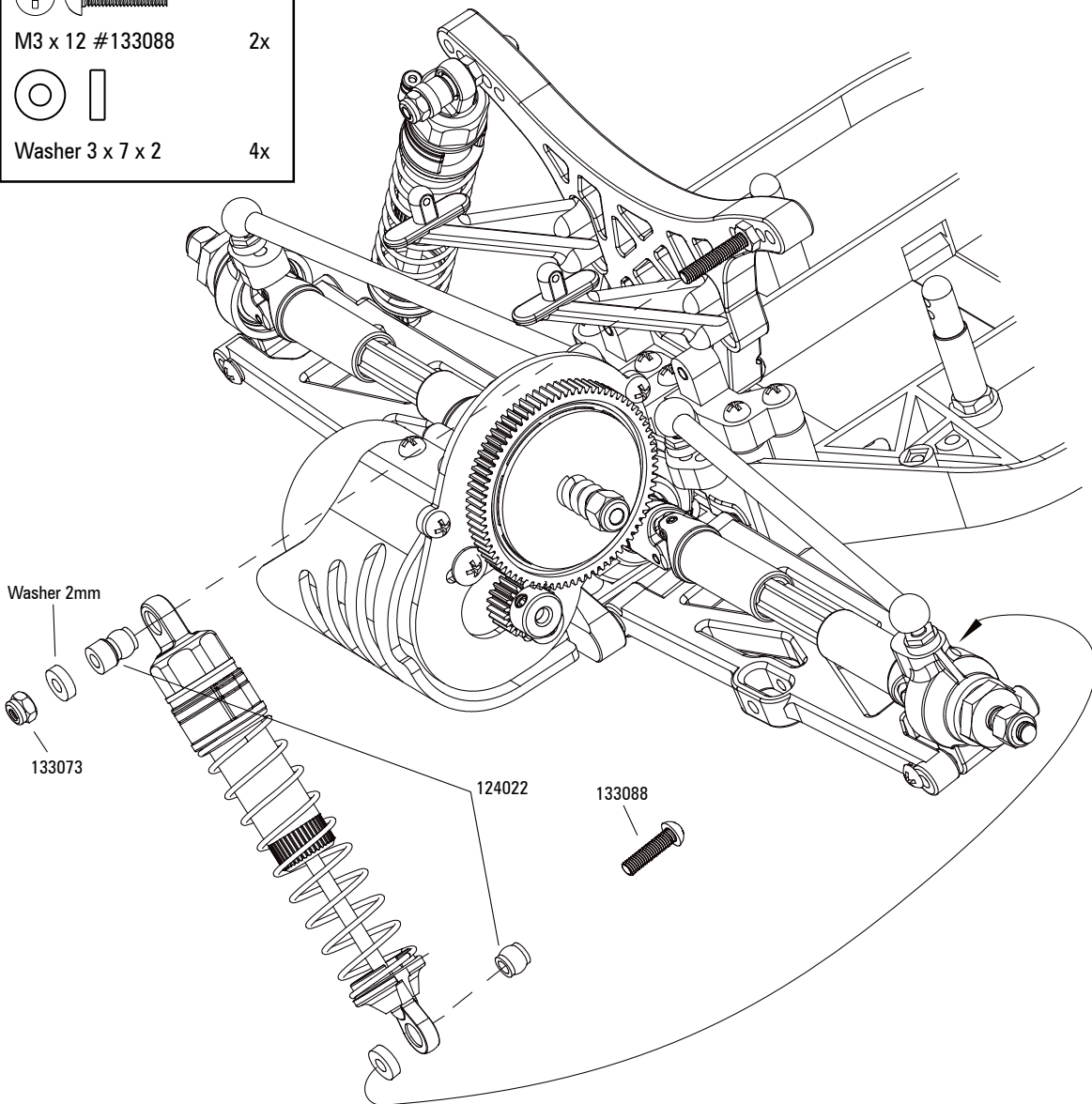




BAUABSCHNITTE CONSTRUCTION SECTIONS

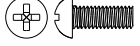

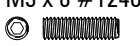


28 REAR SUSPENSION BEFESTIGUNG DER HINTEREN DÄMPFER

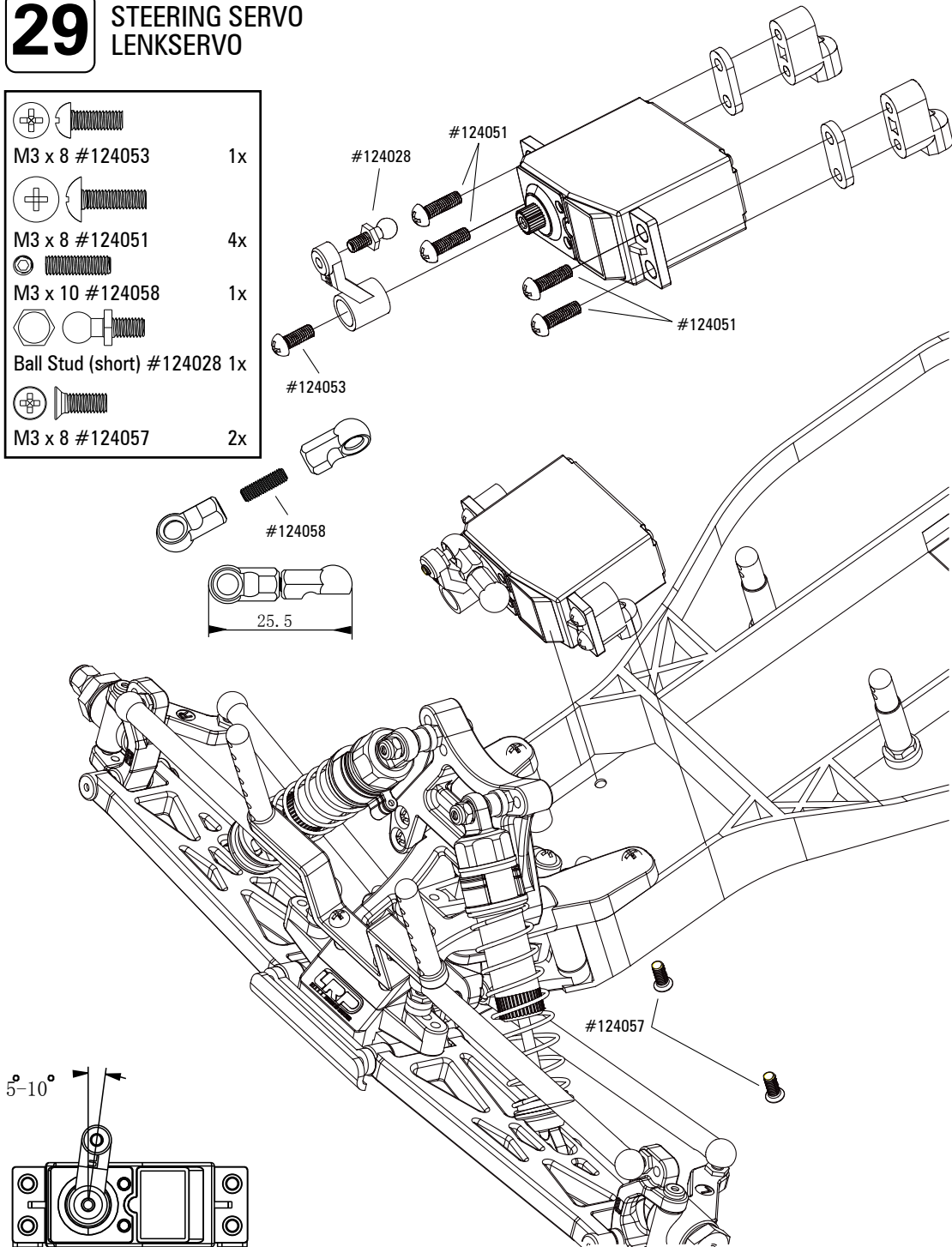
	
M3 x 12 #133088	2x
	
Washer 3 x 7 x 2	4x



BAUABSCHNITTE CONSTRUCTION SECTIONS

29 STEERING SERVO LENKSERVO





	M3 x 8 #124053	1x
	M3 x 8 #124051	4x
	M3 x 10 #124058	1x
	Ball Stud (short) #124028	1x
	M3 x 8 #124057	2x

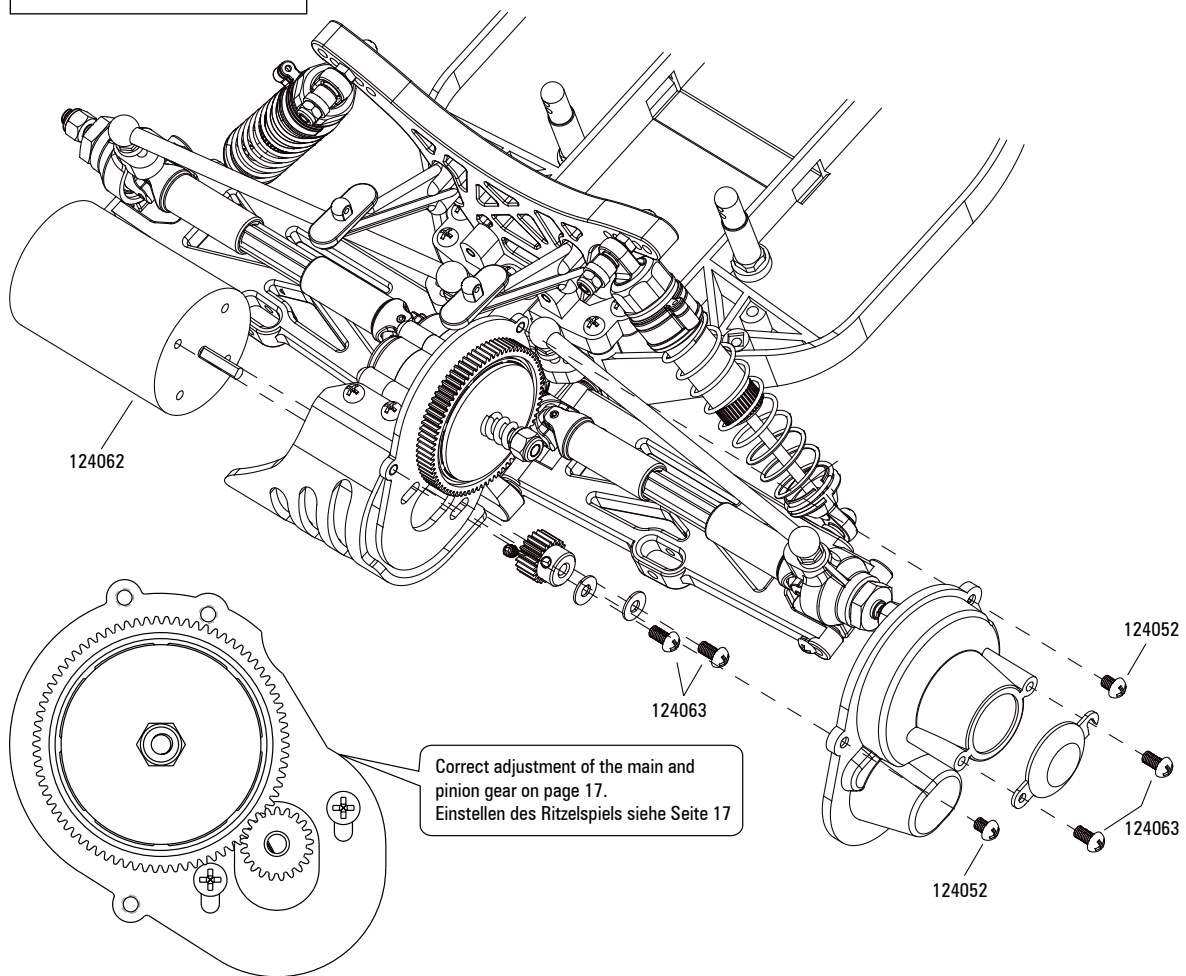




BAUABSCHNITTE CONSTRUCTION SECTIONS

30 MOTOR MOTOR

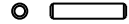

	M3 x 4 #124052	2x
	M3 x 6 #124063	4x
	M3 x 3	1x
	Washer 3 x 6 x 0.5	2x

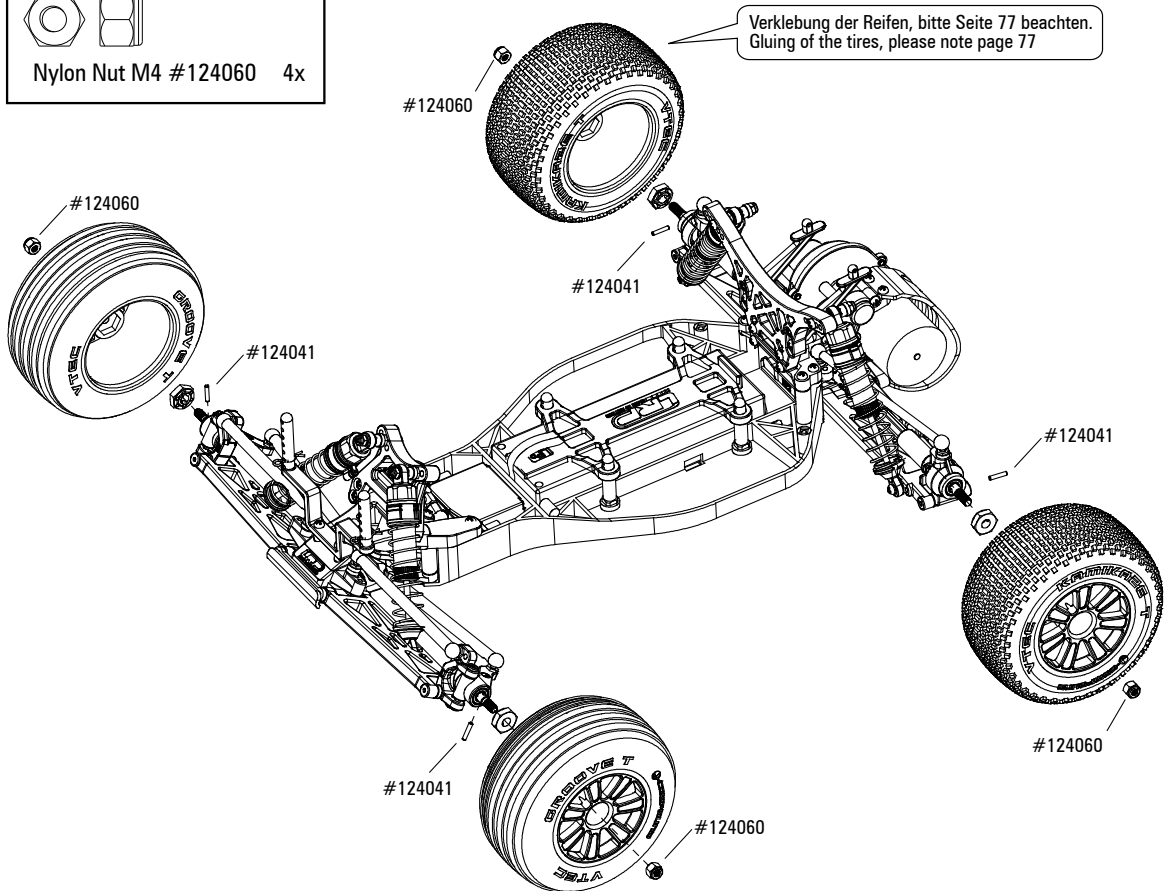


Correct adjustment of the main and pinion gear on page 17.
Einstellen des Ritzelspiels siehe Seite 17

BAUABSCHNITTE CONSTRUCTION SECTIONS

31 TIRE WHEEL RADMONTAGE

	Pin 2 x 10 #124041	4x
	Nylon Nut M4 #124060	4x

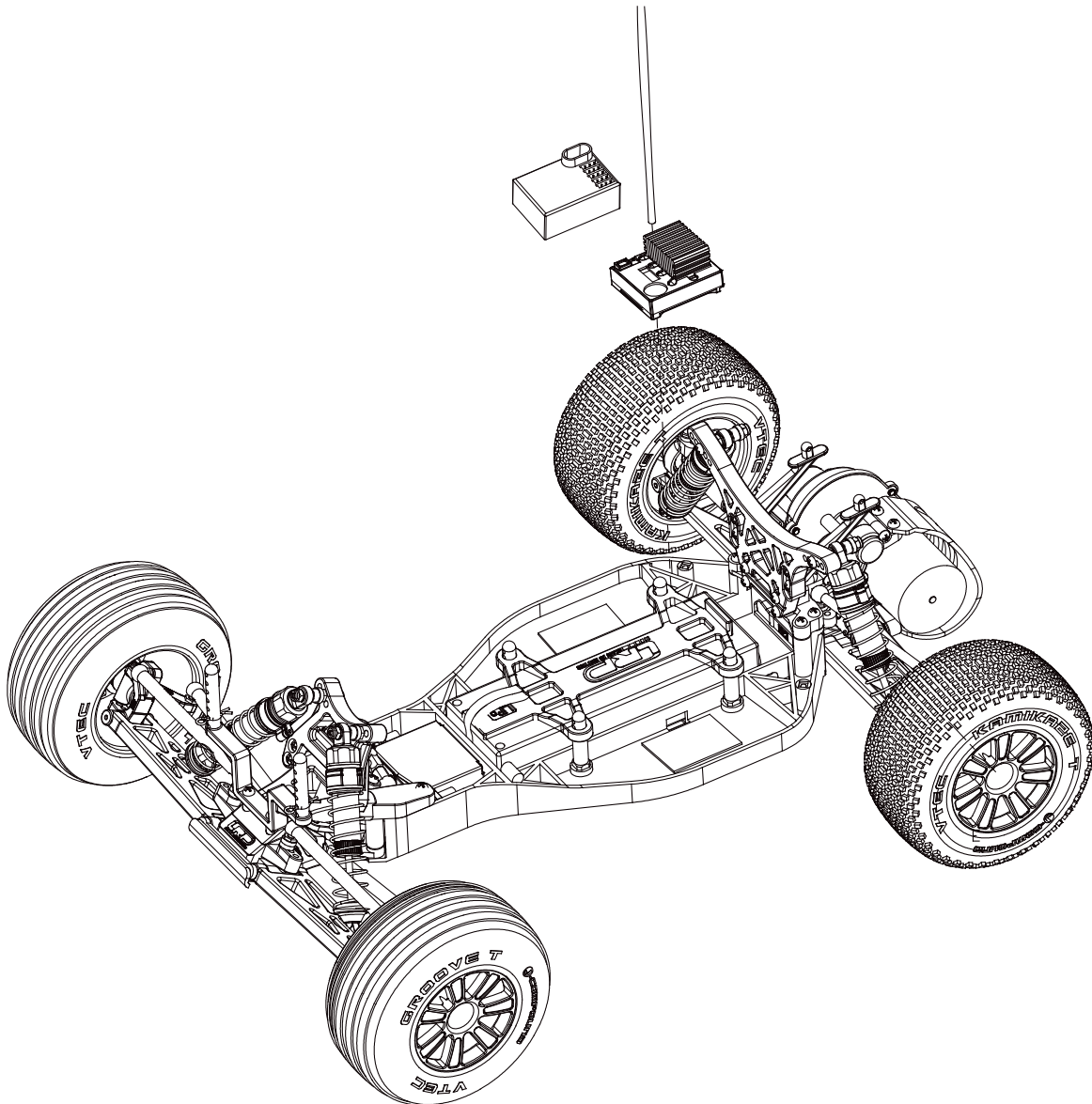




BAUABSCHNITTE CONSTRUCTION SECTIONS

33

ASSEMBLING OF THE ELECTRONIC COMPONENTS
EINBAU DER ELEKTRONISCHEN KOMPONENTEN



BAUABSCHNITTE CONSTRUCTION SECTIONS

34 BODY KAROSSERIE

